

TRANSITION2WORK[®]

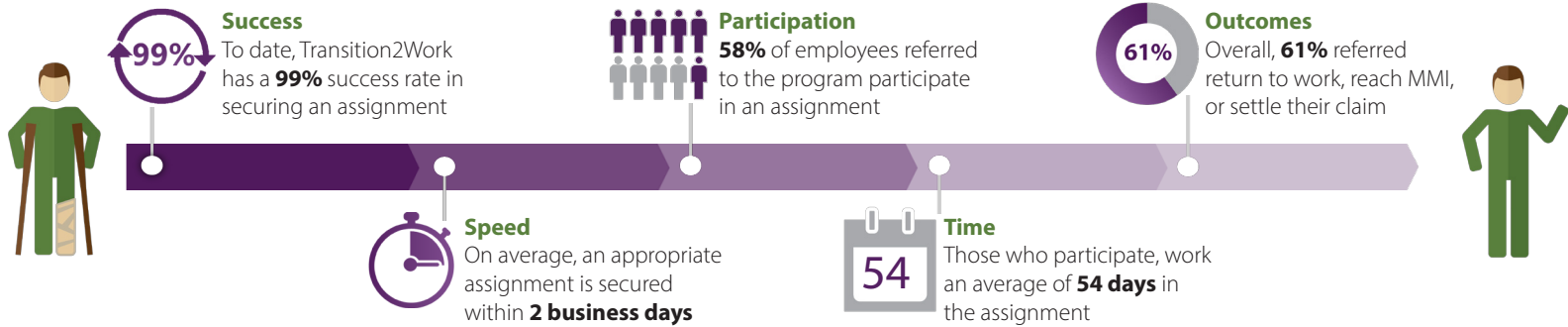
by **ReEmployAbility**

Transition2Work Program Highlights (Results Through 2016)

At ReEmployability, we believe in the value of return to work as the single most important factor that will drive success in a workers' compensation program. That's why more than a decade ago, we created Transition2Work to engage employees in their local community while they recover from an on-the-job injury. By combining business and community, everyone benefits – the injured employee, the community, employers, and carriers!

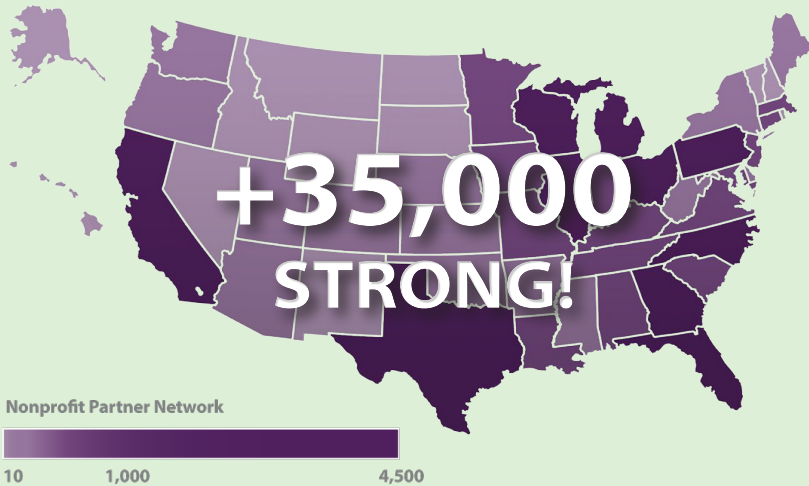
Creating Positive Outcomes for Injured Workers

Transition2Work allows employees to focus on their capabilities, linking them with an appropriate nonprofit assignment in their own community, helping them quickly and safely return to productive, rewarding work while they heal.



Making an Impact on the Community

Each year Transition2Work connects thousands of national and local nonprofit organizations throughout the US with program participants who provide much-needed assistance to help them achieve their valuable service initiatives.



Strong Network

Our nationwide **nonprofit partner network** is more than 35,000 strong & growing daily! We work with a variety of agencies such as those supporting disaster relief, social causes, and veterans.



Community Impact

To date, Transition2Work participants have contributed an estimated **4.5 million** volunteer hours to local & national nonprofit organizations.

40M

National Economic Value

In 2016 alone, participants in our program had an estimated economic impact on nonprofits, valued over **\$40 million**.
(Based on an estimated value of volunteer time used by Corporation for National & Community Service)

Achieving Results for Our Clients

Working together we achieve incredible results! By bringing together business and community, the benefits are mutual and all parties thrive.



Boosting Employee Morale & Corporate Culture

Through the Transition2Work program, employees gain an **improved sense of value** as they engage in the community while they recover.



Creating a Positive Community Connection

Injured employees are often introduced to volunteerism through Transition2Work and **gain new experiences** while making a difference in the community.



Improving Your Bottom Line

Employers and carriers realize an average indemnity savings of **more than \$4,300** per claim referred to the Transition2Work program.